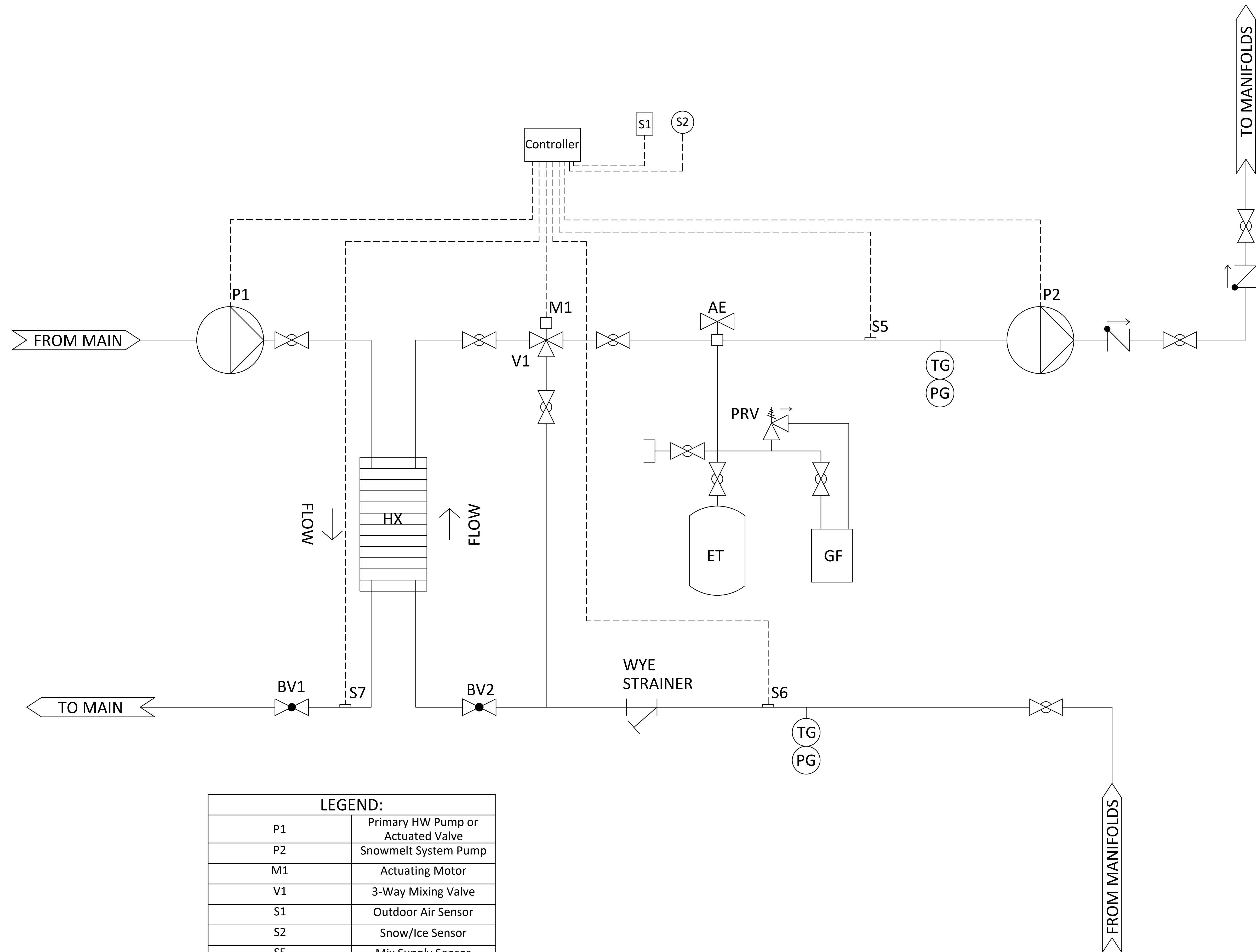


THERMA-HEXX<sup>®</sup>

199 CONSTITUTION AVE. SUITE 7  
PORTSMOUTH, NH 03801  
(603) 319-8815

# Reference



LEGEND:	
P1	Primary HW Pump or Actuated Valve
P2	Snowmelt System Pump
M1	Actuating Motor
V1	3-Way Mixing Valve
S1	Outdoor Air Sensor
S2	Snow/Ice Sensor
S5	Mix Supply Sensor
S6	Mix Return Sensor
S7	Boiler Return Sensor
TG	Temperature Gauge
PG	Pressure Gauge
ET	Expansion Tank
GF	Glycol Feeder
BV1	HW Balancing Valve
BV2	SM Balancing Valve

**Concept Drawing**

This is only a concept drawing, not an engineering drawing. It is not intended to describe a complete system, nor any particular system. It is up to the system designer to determine the necessary components for and configuration of the particular system being designed, including additional equipment, isolation relays (for loads greater than the control's specified output ratings), and any safety devices which in the judgement of the designer are appropriate, in order to properly size, configure, and design that system and to ensure compliance with building and safety codes requirements.

PROJECT:

REV	DESCRIPTION	DATE	BY

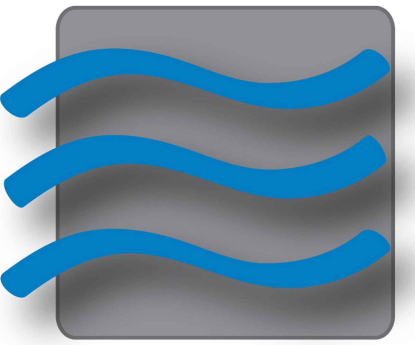
DRAWN BY: JDR	CHECKED BY:
DATE: 2/6/2020	SCALE: N/A

SHEET:

1.1

TITLE:

Standard P&ID for HX



Therma-Hexx

199 CONSTITUTION AVE. SUITE 7  
PORTSMOUTH, NH 03801  
(603) 319-8815

# Reference

PROJECT:

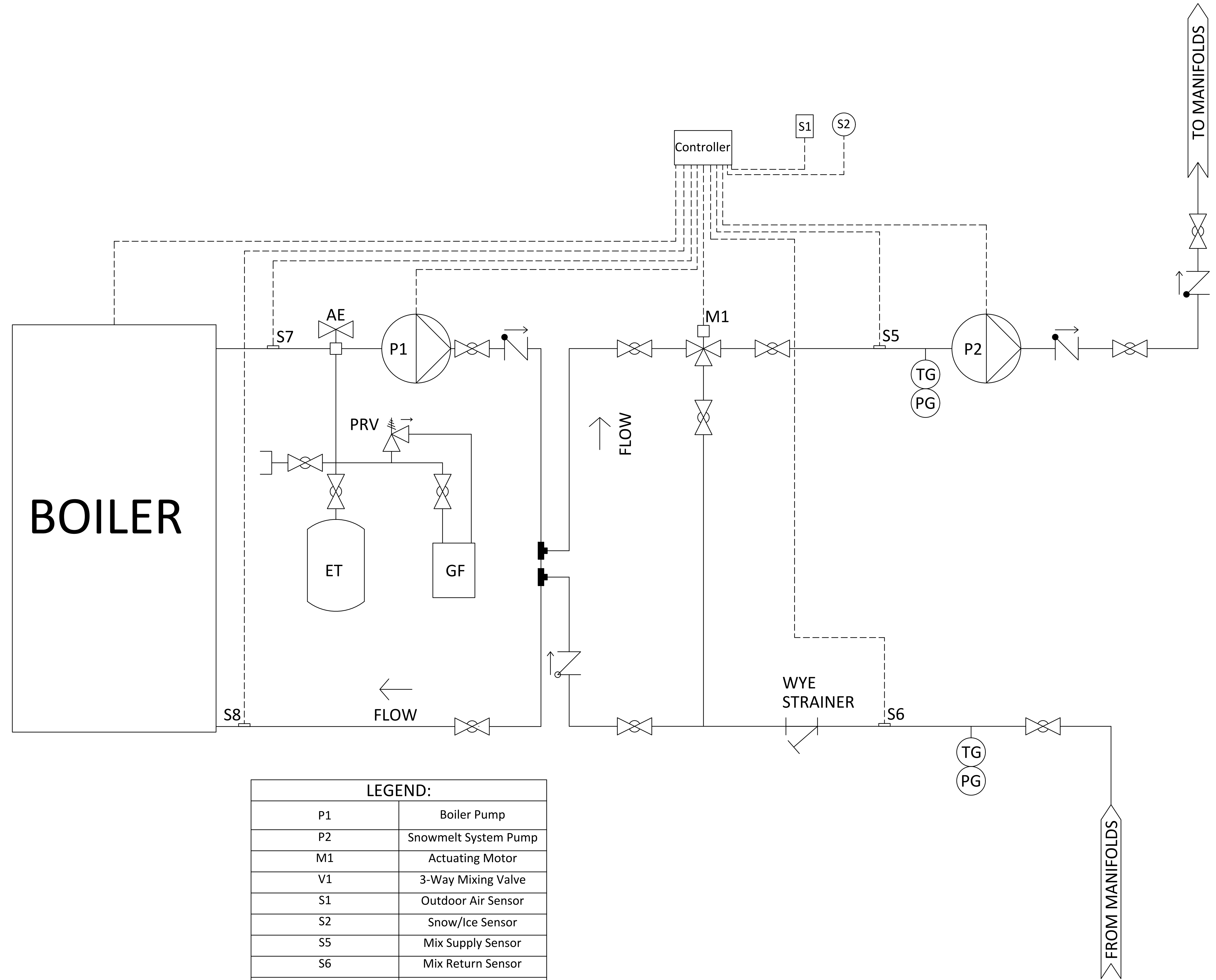
REV	DESCRIPTION	DATE	BY

DRAWN BY: JDR		CHECKED BY:	
DATE: 2/6/2020		SCALE: N/A	

SHEET:

## 1.2

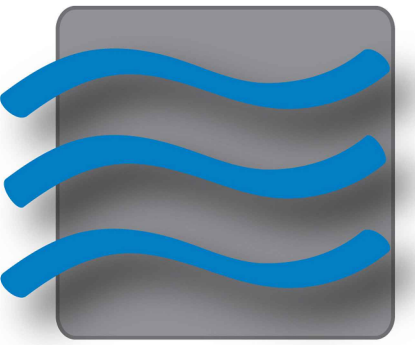
TITLE:  
Standard P&ID  
for Boiler P/S -  
EXP Tank on  
P-Sup



LEGEND:	
P1	Boiler Pump
P2	Snowmelt System Pump
M1	Actuating Motor
V1	3-Way Mixing Valve
S1	Outdoor Air Sensor
S2	Snow/Ice Sensor
S5	Mix Supply Sensor
S6	Mix Return Sensor
S7	Boiler Supply Sensor
S8	Boiler Return Sensor
TG	Temperature Gauge
PG	Pressure Gauge
ET	Expansion Tank
GF	Glycol Feeder

### Concept Drawing

This is only a concept drawing, not an engineering drawing. It is not intended to describe a complete system, nor any particular system. It is up to the system designer to determine the necessary components for and configuration of the particular system being designed, including additional equipment, isolation relays (for loads greater than the control's specified output ratings), and any safety devices which in the judgement of the designer are appropriate, in order to properly size, configure, and design that system and to ensure compliance with building and safety codes requirements.



Therma-Hexx

199 CONSTITUTION AVE. SUITE 7  
PORTSMOUTH, NH 03801  
(603) 319-8815

# Reference

PROJECT:

REV	DESCRIPTION	DATE	BY

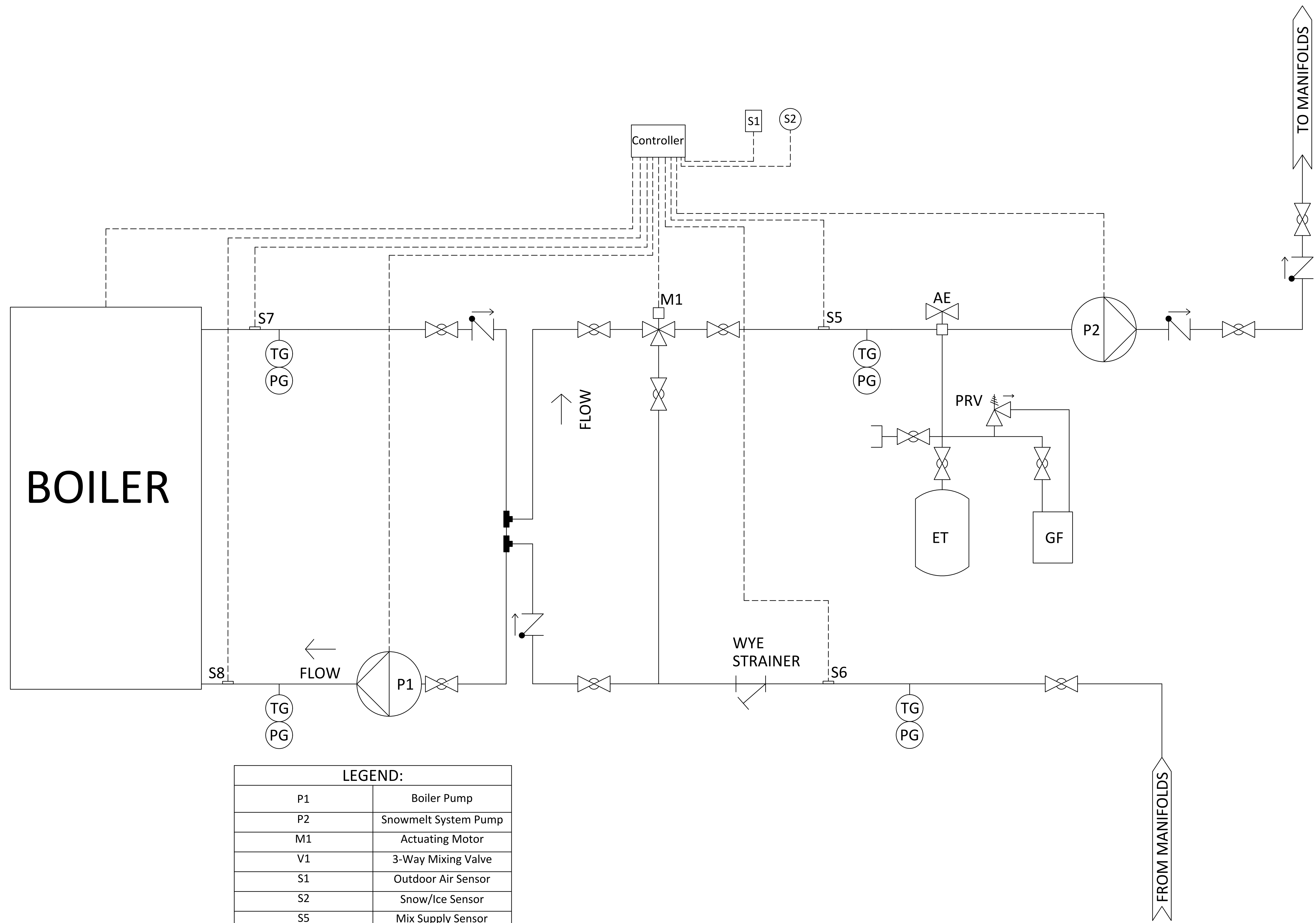
DRAWN BY: JDR	CHECKED BY:
DATE: 2/6/2020	SCALE: N/A

SHEET:

## 1.3

TITLE:

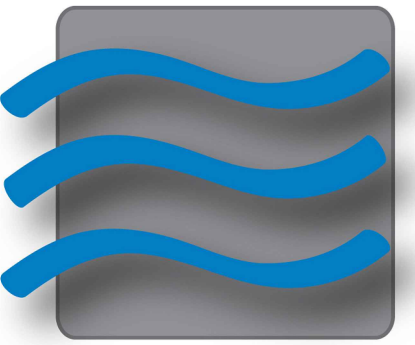
Standard P&ID  
for Boiler P/S -  
EXP on S-S



LEGEND:	
P1	Boiler Pump
P2	Snowmelt System Pump
M1	Actuating Motor
V1	3-Way Mixing Valve
S1	Outdoor Air Sensor
S2	Snow/Ice Sensor
S5	Mix Supply Sensor
S6	Mix Return Sensor
S7	Boiler Supply Sensor
S8	Boiler Return Sensor
TG	Temperature Gauge
PG	Pressure Gauge
ET	Expansion Tank
GF	Glycol Feeder

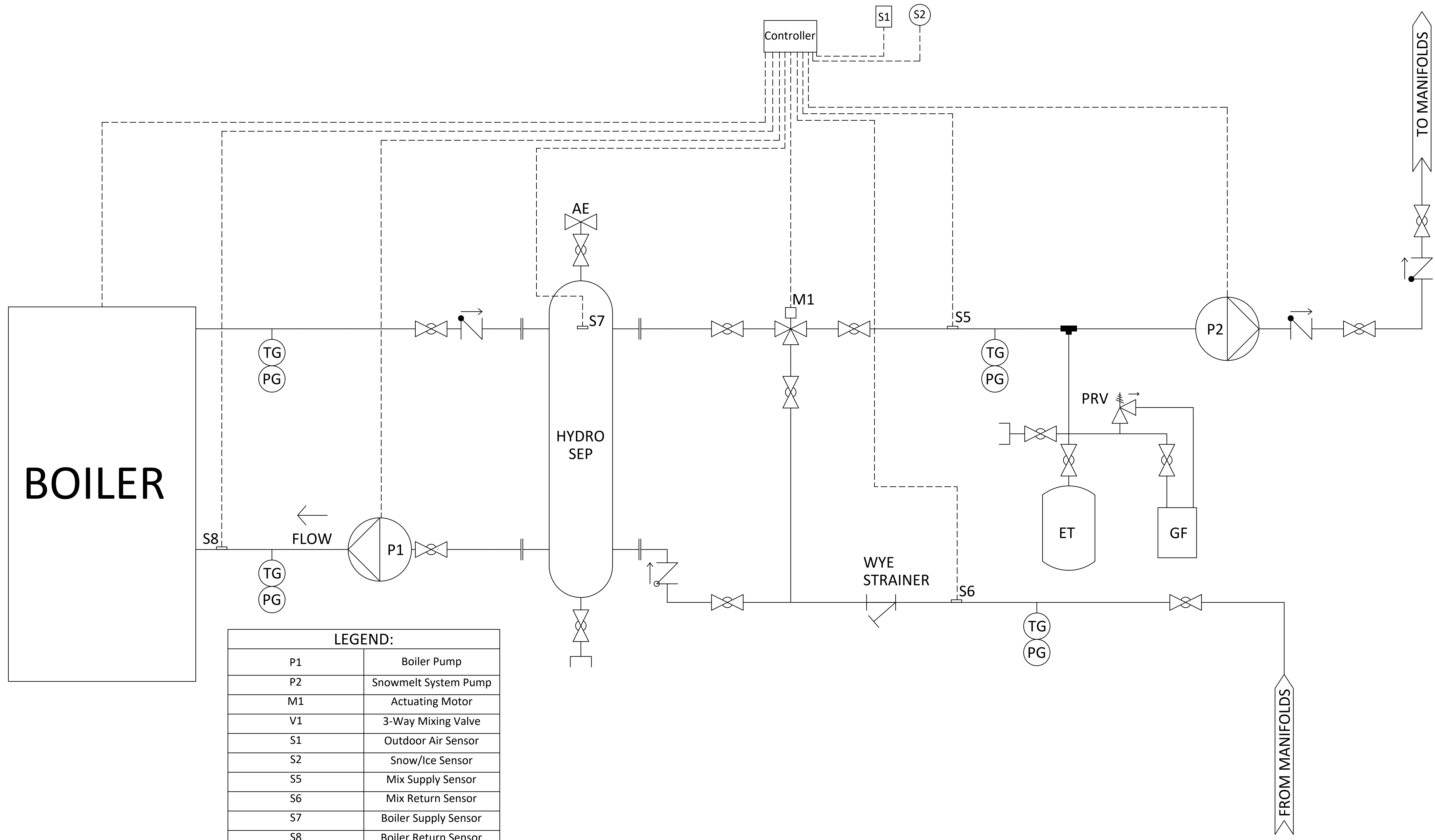
**Concept Drawing**

This is only a concept drawing, not an engineering drawing. It is not intended to describe a complete system, nor any particular system. It is up to the system designer to determine the necessary components for and configuration of the particular system being designed, including additional equipment, isolation relays (for loads greater than the control's specified output ratings), and any safety devices which in the judgement of the designer are appropriate, in order to properly size, configure, and design that system and to ensure compliance with building and safety codes requirements.



199 CONSTITUTION AVE. SUITE 7  
PORTSMOUTH, NH 03801  
(603) 319-8815

# Reference



**LEGEND:**

P1	Boiler Pump
P2	Snowmelt System Pump
M1	Actuating Motor
V1	3-Way Mixing Valve
S1	Outdoor Air Sensor
S2	Snow/Ice Sensor
S5	Mix Supply Sensor
S6	Mix Return Sensor
S7	Boiler Supply Sensor
S8	Boiler Return Sensor
TG	Temperature Gauge
PG	Pressure Gauge
ET	Expansion Tank
GF	Glycol Feeder

**Concept Drawing**

This is only a concept drawing, not an engineering drawing. It is not intended to describe a complete system, nor any particular system. It is up to the system designer to determine the necessary components for and configuration of the particular system being designed, including additional equipment, isolation relays (for loads greater than the control's specified output ratings), and any safety devices which in the judgement of the designer are appropriate, in order to properly size, configure, and design that system and to ensure compliance with building and safety codes requirements.

PROJECT:

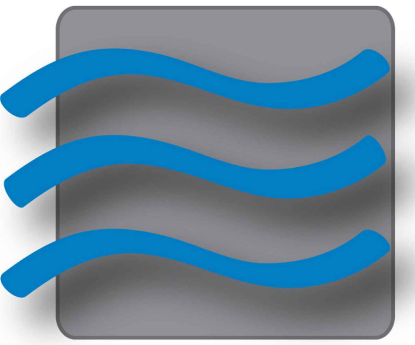
REV	DESCRIPTION	DATE	BY

DRAWN BY: JDR	CHECKED BY:
DATE: 2/6/2020	SCALE: N/A

SHEET:

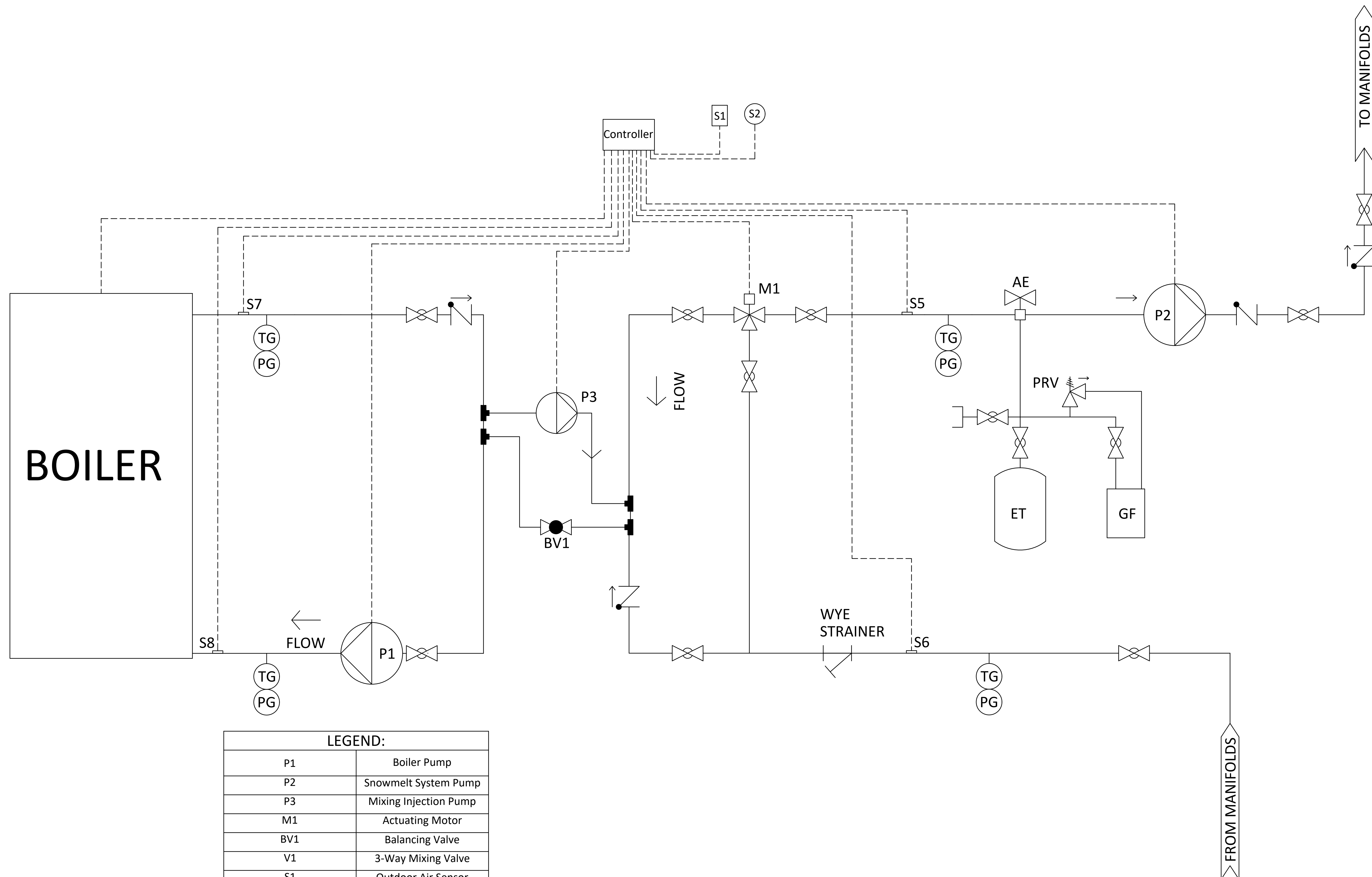
1.4

TITLE:  
Standard P&ID  
for Boiler P/S -  
EXP on S-S



Therma-Hexx

199 CONSTITUTION AVE. SUITE 7  
PORTSMOUTH, NH 03801  
(603) 319-8815



LEGEND:	
P1	Boiler Pump
P2	Snowmelt System Pump
P3	Mixing Injection Pump
M1	Actuating Motor
BV1	Balancing Valve
V1	3-Way Mixing Valve
S1	Outdoor Air Sensor
S2	Snow/Ice Sensor
S5	Mix Supply Sensor
S6	Mix Return Sensor
S7	Boiler Supply Sensor
S8	Boiler Return Sensor
TG	Temperature Gauge
PG	Pressure Gauge
ET	Expansion Tank
GF	Glycol Feeder

**Concept Drawing**

This is only a concept drawing, not an engineering drawing. It is not intended to describe a complete system, nor any particular system. It is up to the system designer to determine the necessary components for and configuration of the particular system being designed, including additional equipment, isolation relays (for loads greater than the control's specified output ratings), and any safety devices which in the judgement of the designer are appropriate, in order to properly size, configure, and design that system and to ensure compliance with building and safety codes requirements.

Reference

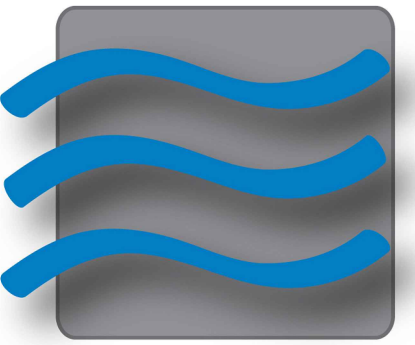
PROJECT:

REV	DESCRIPTION	DATE	BY

DRAWN BY: JDR		CHECKED BY:	
DATE: 2/6/2020	SCALE: N/A		

SHEET:  
  
**1.5**

TITLE:  
Standard P&ID  
for Boiler P/S -  
EXP on S-S



THERMA-HEXX<sup>®</sup>

199 CONSTITUTION AVE. SUITE 7  
PORTSMOUTH, NH 03801  
(603) 319-8815

# Reference

PROJECT:

REV	DESCRIPTION	DATE	BY

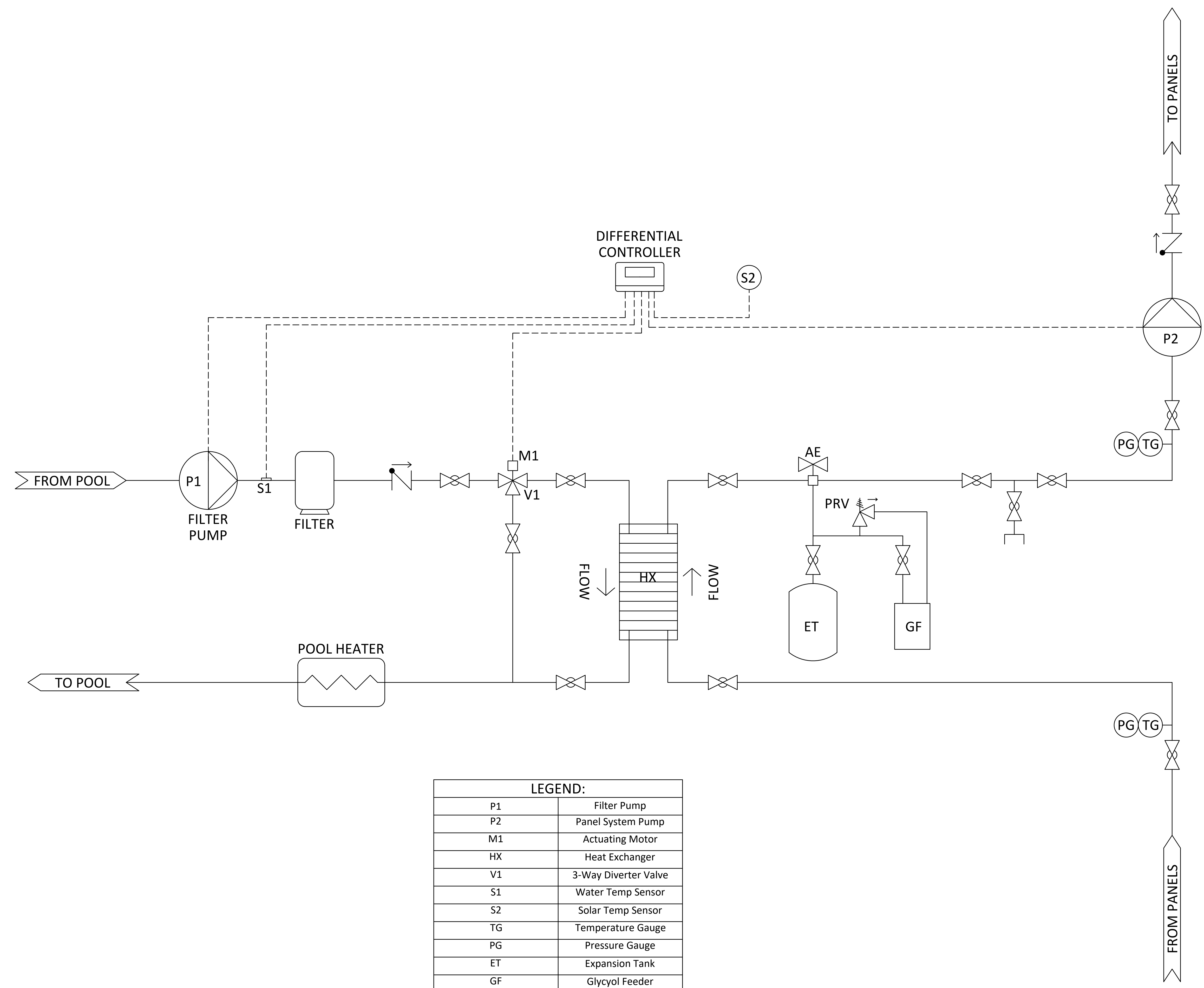
DRAWN BY: JDR		CHECKED BY:	
DATE: 2/6/2020	SCALE: N/A		

SHEET:

## 1.6

TITLE:

Standard P&ID  
for Pool Heating



**LEGEND:**

P1	Filter Pump
P2	Panel System Pump
M1	Actuating Motor
HX	Heat Exchanger
V1	3-Way Diverter Valve
S1	Water Temp Sensor
S2	Solar Temp Sensor
TG	Temperature Gauge
PG	Pressure Gauge
ET	Expansion Tank
GF	Glycol Feeder
BV1	HW Balancing Valve
BV2	SM Balancing Valve

**Concept Drawing**

This is only a concept drawing, not an engineering drawing. It is not intended to describe a complete system, nor any particular system. It is up to the system designer to determine the necessary components for and configuration of the particular system being designed, including additional equipment, isolation relays (for loads greater than the control's specified output ratings), and any safety devices which in the judgement of the designer are appropriate, in order to properly size, configure, and design that system and to ensure compliance with building and safety codes requirements.